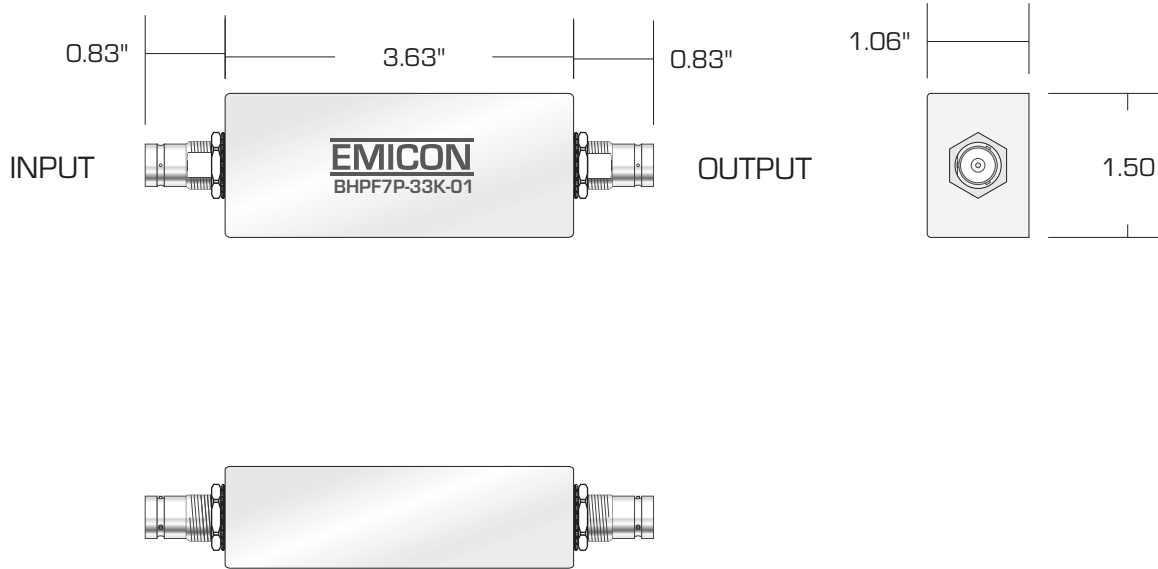


BLPF7P-33K-01

LOW PASS FILTER

REV	DATE	DESCRIPTION
A	03-31-09	Diagram- Common ground and Connectors shown
B	04-07-14	Dimensions changed from 4"x1.75"x1.5 to 3.63"x1.5"x1.06"



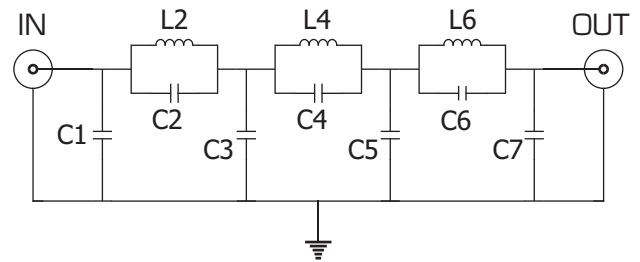
BNC Female Connectors

OUTLINE DRAWING

Cut-off Frequency:	33 KHz
Source/Load Impedance:	50 Ohms
Max Current:	12 A
Linear Signal Current:	8.3 mA

ATTENUATION	
FREQUENCY	TYPICAL
31.4 KHz	1 dB
33 KHz	3 dB
35.4 KHz	10 dB
37.1 KHz	20 dB
39.1 KHz	30 dB
41.2 KHz	40 dB
43.1 KHz	50 dB
44.4 KHz	60 dB
45.2 KHz	> 60 dB .

SPECIFICATIONS



FUNCTIONAL DIAGRAM